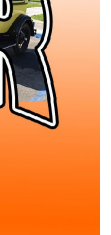


Orange County
Model A Ford Club



56 Years



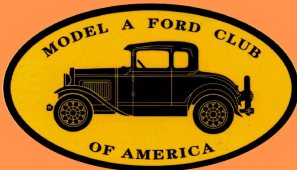
Volume 58, Issue 11

November, 2018

Editor Tissy Smith-Hatcher

It is one of the blessings of old friends that you can afford to be stupid with them.

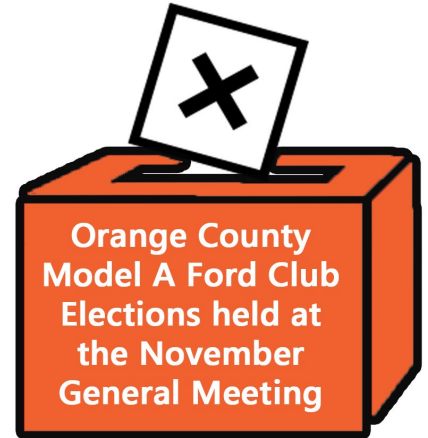
Ralph Waldo Emerson



Inside this issue:

- Differential and Rear Axle 2
- Tours & Activities/Calendar/Swap Meets 3
- Board Member Contact Info General Meeting Minutes 5
- New Members & Changes/For Sale 6
- Jim's Technical Tip 8
- Tiny Tips 9
- Sunshine & Sorrow 11

YOUR VOTE COUNTS!



Join Us for the Walk to End Alzheimer's at Angels Stadium



Happy Thanksgiving

Differential and Rear Axle (This is a follow up to a previous seminar on 2/10/18)

By: Dennis Kliesen

Picking up where we left off on assembling a rear axle, I will continue to the part where the axles are installed in the differential carrier. Begin by disassembling the left side axle housing from the center axle housing. Be careful with the gaskets taking into account the thickness of gaskets. I prefer to use the gaskets from the Best brand set, part # 10195, often times referred to as the deluxe set from the Model A vendors. Best gasket sets have each of the different thickness gaskets in a different color which helps speed the process by changing to a different color when trying to reach a different preload and or ring gear to pinion backlash. The dimensions of each gasket are printed on the label, white-.003, ivory-.005, green-.007, blue-.009. Also included in the set are the universal and speedometer housing gaskets, and axle gaskets, shown in image 1.



Remove the carrier from the axle assembly and disassemble the 9 nuts and bolts holding the carrier together. Examine the inside of the carrier where the backside of the spider gears rest against. If the carrier is worn as shown in Image 2, do not reuse the carrier. With some patience good carriers can be

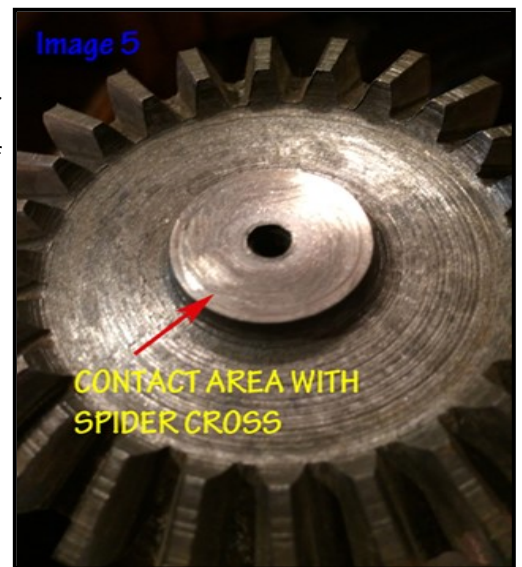


found. Look around at the swap meets for better parts as these are not available new. Make certain carrier halves are a matched pair. Image 3 shows a good example of very little wear. Examine both axles for wear and pitting on the teeth, the center of the axle at the end next to the gear, and the condition of the threads and key slot at the tapered end of the axle. Look for better axles if your axles look poor to marginal. Remember you don't want to do this job over from installing bad parts. Examine the spider gears and spider cross for wear and pitting.

**FROM YOUR
TECHNICAL DIRECTOR**



Image 4 and Image 5 show area where the axle makes contact with the center of the spider gear cross. This area of the axle and the area of the carrier where the backside of the axle teeth determine the amount of clearance between the axle shaft and the spider. Assemble the axles, spider cross, and carriers together without the spider gears and no assembly lube. Bolt these together temporarily. Clamp one of the axles in a vise with the carrier and opposite axle hanging below the jaws of the vise. With a feeler gauge you should have .015"-.020" axle end play when assembled.



After the axle end play has been determined to be good, apply some assembly lube to the areas where parts mate to one another. With the carrier disassembled, shows where to measure between the spider cross and the end of the axle. Do this procedure without the spider gears in the carrier and no assembly lube. (Continued on Page 4)

Upcoming Tours and Activities Calendar



Nov 3 (Sat) First Saturday Breakfast BS Session ~ 8AM at The Katella Grill, 1325 W Katella Ave, Orange



Nov 8 (Thu) General Meeting will be at 7:30PM. CHOC Hospital Complex, 455 South Main

Street, Orange. Guests are always welcome. Board meeting at 6PM



Nov 10 (Sat) Walk to End Alzheimer's at Angels Stadium 7:30am-noon. Show your car off as the people walk by.



Nov 10 (Sat) Technical Seminar at Jim Michaeloff's, 4424 Birchwood Ave, Seal Beach, 8AM. Seminar

will be about rear brakes and include Flathead Ted Floaters Kit.



Nov 17 (Sat) Tour to the Automobile Driving Museum, 610 Lairport St, El Segundo followed by lunch at Proud Bird.

Tour led by Ed & Patty Cote.



Nov 22 (Thu) No Fourth Thursday Breakfast for November. For info contact Terry Collings at 714-970-7194

11/27-12/1 National Award Banquet, see tucsonmodelafordclub.org



Dec 1 (Sat) First Saturday Breakfast BS Session ~ 8AM at The Katella Grill, 1325 W Katella Ave, Orange

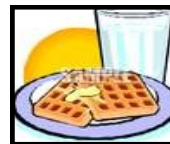


Dec 13 (Thu) General Meeting will be at 7:30PM. CHOC Hospital Complex, 455

South Main Street, Orange. Guests are always welcome. Board meeting at 6PM



Dec 14 (Fri) Newport Harbor tour of holiday lights at dinner, 5:30PM-limited spaces available



Dec 27 (Thu) Fourth Thursday Breakfast. Location to be determined.

2019

Jan 6 (Sun) Annual Installation Banquet, The Villa Restaurant, 510 E Katella Ave, Orange, 1PM-4PM

Mar 24 (Sun) Pancake Breakfast, Hart Park, Orange

Swap Meets/Car

Nov 11 (Sun) Long Beach Hi Performance Show and Swap Meet, Long Beach Veteran's Stadium, 5000 Lew Davis, Long Beach 90808, 6am-1pm

Nov 24 (Sat) 12th Annual Rockabilly Extravaganza Car Show & Music Festival, Riverside Airport, 6951 Flight Rd, Riverside, 9am

Dec 2 (Sun) Pomona Swap Meet and Classic Car Show, 1101 W McKinley Avenue Pomona CA 91768. 4am-1pm

Dec 9 (Sun) Long Beach Hi Performance Show and Swap Meet, Long Beach Veteran's Stadium, 5000 Lew Davis, Long Beach 90808, 6am-1pm

2019

Jan 6 (Sun) Long Beach Hi Performance Show and Swap Meet, Long Beach Veteran's Stadium, 5000 Lew Davis, Long Beach 90808, 6am-1pm

Jan 13 (Sun) Pomona Swap Meet and Classic Car Show, 1101 W McKinley Avenue Pomona CA 91768. 4am-1pm

Jan 26 (Sat) Henry's "T" Party at the Auto Driving Museum. Open to all A's and T's. 10am-2pm

Jan 26-27 Turlock Swap Meet, Stanislaus County Fairgrounds. 7am-5pm

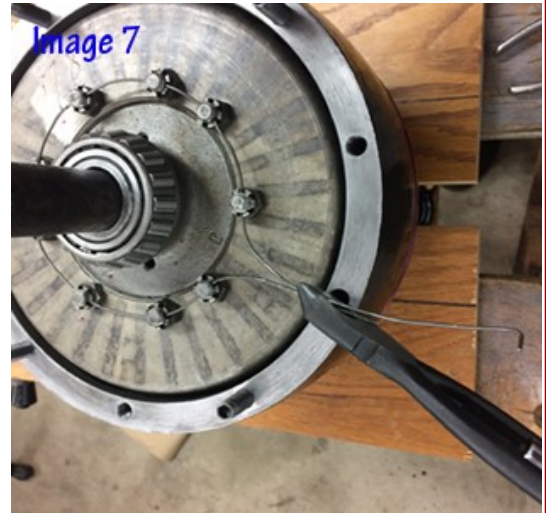
Feb 10 (Sun) Long Beach Hi Performance Show and Swap Meet, Long Beach Veteran's Stadium, 5000 Lew Davis, Long Beach 90808, 6am-1pm

Feb 22-24 Big 3 Swap Meet, Qualcomm Stadium, San Diego

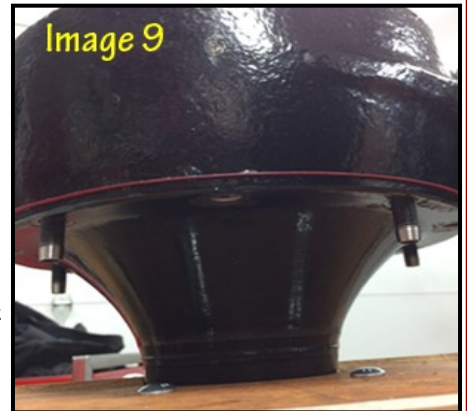


(Cont'd from Page 2) Image 6 shows where to measure for clearance, the carrier is not assembled in the image to better show where to measure.

When the axle end play has been determined to be good, reassemble the carrier halves with the spider gears, spider cross, and both axle shafts. Install the ring gear with bolts and nuts. Position the bolts with the safety wire holes to be in alignment with the corresponding bolt next to each other as seen in Image 7. Tighten all 9 castle nuts to 35 lbs torque. Thread the safety wire through the bolts and twist ends together. Before installing the axles and carrier assembly into the axle housings, remove the center



banjo housing. Install new axle seals in the housings. Most of the Model A vendors sell an installer for the end of a 3/4" pipe – I screw a cap on the other end of the pipe to prevent damaging the other end. When the center banjo housing is removed, replace damaged gaskets of equal thickness. My preference of gasket sealer is High Tack Spray-A-Gasket sealer. I apply a couple coats to each side of each gasket. A single coat where gaskets meet each other should be adequate. What I like about the Spray-A-Gasket is it leaves a nice even coat of sealer when applied. Apply outdoors on a piece of cardboard. Image 8. Install some guide studs in the center banjo housing before assembling to axle housing Image 9. Install 10 bolts and torque to 35 lbs. (Continued on Page 6)



Shirley Temple was born April 23, 1928 but that didn't stop her from entering show biz early. She was a very young actress and is now the most popular child star in history. She made her start in movies when she was only three years old. Temple could act, sing, dance, she was a famed star adored by many people of different ages. At age six, Temple won the juvenile Academy Award in 1935, becoming the youngest to ever receive an Academy Award. by 1936 Shirley Temple was receiving \$50,000 per film by 20th Century- Fox .



2018 BOARD MEMBERS

President – Jim Runyon
714-527-1829/jamesfrunyon@aol.com
VP/Activities – Louise Hall
714-282-0499/rickandlouise@socal.rr.com
Secretary – Norm Kredit
714-635-3335/leorakredit@yahoo.com
Treasurer – Marilyn Singer Hawkins
714-730-4026/jmsinger@pacbell.net
Technical – Dennis Kliesen
949-466-7475/drkliesen@gmail.com
Editor – Tissy Smith-Hatcher
714-546-8554/tissysmith1@gmail.com
Immediate Past President – Don Ratzlaff
714-529-5062/wadedon@pacbell.net

COMMITTEES

ACCC Representative – David Knapp
(949) 243-5210/david-knapp@cox.net
Breakfast Committee – Terry Collings
714-970-7194/mtcollings@sbcglobal.net
Club Greeter – Doris Marshall
310-378-5061/dandd51@gmail.com
Election Chairperson – Joe Goff
949-768-4627/joe@abt-tax.com
Historian & Librarian – Steve Pavich
714-963-2633/spavich@socal.rr.com
Membership Chairperson – Scott Limbrock
948-981-8776/sbl.frisco@gmail.com
Merchandise Director – Cathy O'Brien
714-777-0771/yglsrden@aol.com
Pancake Breakfast Setup & Coordination –
Frank Reese, 714-970-6262/Rfrtrust34@
yahoo.com and Don Ratzlaff, 714-529-
5062/wadedon@pacbell.net
Raffle – Ed Cote
714-542-6161/patricia.cote@att.net
Refreshments – Carolyn Ratzlaff
714-529-5062, dcratzy@gmail.com and
Dianne Runyon 714-390-1528/
jamesfrunyon@aol.com
Regional Representative, SCRG –
Carolyn Ratzlaff, 714-529-5062/
dcratzy@gmail.com
Sunshine & Sorrow – Pam Heiland
714-417-3111/colapam@sbcglobal.net
Webmaster – Bruce MacIntosh
949-857-4723/brucem@genimage.com

Please Note: Some information contained in our newsletter has been reprinted from other newsletters; we thank and acknowledge them.

General Meeting Minutes

OCMAFC General Meeting Thursday, October 11, 2018 Wade Education Center at CHOC



The meeting was delayed slightly while medics attended to member JP who had a nasty fall in the parking lot resulting in a trip to the nearby emergency room. *

Diane Gaughen led the flag salute. New members William and Mark Smith were introduced followed by a joke from Marilyn Hawkins filling in for our usual jokester Doris Marshall.

Minutes: September minutes were approved as published in the Distributor newsletter without corrections.

Financial: Treasurer Marilyn Hawkins reported membership increased to 171. Receipts still pending; however, budget and finances are in good shape. Note: Financial records are open for perusal to members at any time.

Activities: Vice President/Tour Director Louise Hall reviewed upcoming events.

Refer to calendar for October and November. A harbor boat tour is in the works for

December 14, out of Newport Beach Fun Zone area. Pre-pay and reservations are essential. Cost is \$35.00 and limited to members 12 yrs and older. The price includes buffet dinner and 2-hour tour. Contact Louise if interested and not already signed up. Future plans include a tour of Camp Pendleton in January, and June overnight to Riverside area for the Great Race start. Louise reminded members of our participation in a “car display” during the Annual Walk to End Alzheimer’s at Angel Stadium November 10.

Technical: Dennis Kliesen: plan continues to have a seminar the Saturday following the General Meeting. Contact Dennis with issues and ideas for future events.

Sunshine/Sorrow: Pam Heiland reported by text message that cards were sent to Patty Cote and Leonard Nettles who are recovering from “bionic replacement” surgeries. Patty was present tonight and is doing well. Apparently Pam had a fall earlier in the day and was unable to attend in person.

4th Thursday Breakfast will be at Broken Yolk Restaurant on 10/25 in Costa Mesa per Terry Collings. November event cancelled due to Thanksgiving. Hard Luck Trophy. Don Ratzlaff confirmed a story about Domonic Cimarusti’s dilemma with the “trailing wire” which turned out to be the speedometer cable.

Domonic was not in attendance to defend himself, so Jim and/or Don will see that he gets the coveted trophy.

Drawings: Darwin Kibby had the winning ticket for the name badge drawing, and Bob Hawkins for the membership roster drawing.

Refreshments included a birthday cake for the October birthdays, Frank Reese, Phil Joujon-Roche and Jim Glendinning. Thank you to Tissy, Linda Thom and Diane Gaughen who provided and served a great assortment of snacks.

(Continued on Page 10)

**NEW MEMBERS
CHANGES
CORRECTIONS**

Smith, William (Father) & Mark (Son), 12132 Sun Grove St, Garden Grove, CA 92840-4227; Cell 949-415-7732 (Mark's); Email: earlyford-smiths@gmail.com; 1930 Briggs body Fordor and 1931 DLX Coupe; Joined 2018

Edmonson, Michael & Chrisanne, 15702 Grey Oaks St, Westminster, CA 92683-6981; Hm 714-531-2591; Cell 714-615-5751 (Mike's); Email: Mike - michael.edmonson@me.com; Chrisanne - moosetoo@icloud.com; 1928 Model A Ford; Joined 2018



FOR SALE: Parts for 1929 Model A Ford: 1-1/2 chassis plus fenders, steering column and steering wheel; 6 wheels and 2 old tires; 2 Model A motors; metal body for pickup truck; 1 radiator. All this comes with a pink slip for the 1929 Ford. I believe I have an oogah horn around here someplace. If found, it is part of the deal. \$1,800 or best offer. Call Hall at 909-624-0338 (Claremont area)

Five 19" Goodyear White Wall tires. Well-worn but do have just a bit of tread left. Free or best offer! David Knapp (949) 243-5210



(Continued from Page 4) Tape the threads on each axle and apply grease to the tape and taper of the axle shaft. This helps prevent damage to the seal when installing the axle and carrier assembly. Image 10. Place the gaskets previously from setting the carrier bearings preload, sprayed with gasket sealer. Install the LH drivers side axle housing. Install the 10 bolts and tighten to 35 lbs. torque. As seen in Image 11. Install the torque tube to the banjo center housing and tighten bolts to 35 lbs torque. Safety wire the torque tube bolts. Trim the excess gasket from between the axle housings and the center housing. Finish by painting the rear axle assembly.





*Installation Banquet
 Sunday January 6, 2019
 1:00pm to 4:00pm
 The Villa Restaurant
 510 E Katella Ave, Orange, CA 92867*

*Nominee for President
 Louise Hall*

*Nominee for Vice President/
 Activities Director
 Steve Pavich*

*We still have an opening
 for Secretary*

CLUB TOUR TO CAMP PENDLETON TO VIEW THE SANTA MARGARITA RANCH HOUSE COMPLEX. MARK YOUR CALENDARS AND SIGN UP EARLY AS ENTERING THE MARINE BASE WILL REQUIRE IDENTIFICATION PRIOR TO ENTRY.

THIS IS A WEEKDAY TOUR. PLEASE HELP US PLAN AHEAD AS THIS IS A GREAT OPPORTUNITY TO TOUR AN AREA MOST CIVILIANS IN SoCAL DON'T HAVE AN OPPORTUNITY TO SEE. WATCH FOR MORE DETAILS.

JANUARY 17th

Save Time by Working Smarter



Jim's Tech Tip

by Jim Cannon, MAFCA Technical Director

While My Oil Gently Drains

Every time you drain the engine oil to change it, while you are waiting for all the dripping to stop, may I suggest you add the following simple items to your oil change routine?

- Check the ignition point gap with a 0.020" feeler gauge. Adjust if required. Look at the points to make sure they still look good (not pitted or burnt).
- Wipe off the ignition cam with a rag. Now put a small dab of fresh cam grease on 2 of the lobes of the ignition cam.
- Put a drop or two of light oil in the little oiler on the side of the distributor. If you have the cam screw with the hole drilled in it, put a drop or two in there, too.
- Put a couple of drops of engine oil in each hole on top of the throttle assembly that is bolted to the back of the engine.
- Check the fan belt for tension.

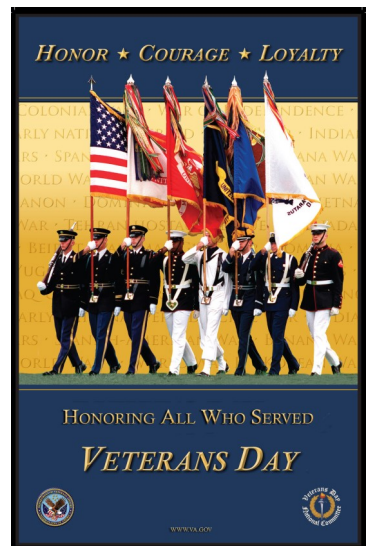
That's it! In the time it takes for the oil to all drain out, you have taken care of several little routine maintenance items on you're "A" that will help keep it running well and avoid a problem on the road.

Have a Model A Day!

copywrite Frisco illustrationsOf.com/89401

When they first started raising money for the construction of the Model A Museum in 2011 about 1550 bricks had been ordered in memory or in honor of your favorite Model Aers, Model A clubs and regions. They have room under the gas canopy at the Museum for only about 110 more bricks. Their goal is to finish off that area by Model A Day 2019. So how about ordering a brick for a loved one for Christmas? A personalized brick would

make a great gift for that parent or grandparent who really doesn't need anything and, of course, it would benefit the Model A Museum as well. It will be in place at the Museum by September 21, 2019. Use the brick order form at: www.maffi.org/WSContent/Download/BuyABrickDonation.pdf



We encourage everyone to opt for email of your Distributor. It gets to you quicker, saves the environment and, best of all, reduces the cost of your membership.



*Just email
tissysmith1@gmail.com*

TINY TIPS

HARD STEERING

If you feel that your Model A is steering harder than other Model A's, harder than it should, there are several things you can do to ease the problem.

1. Check your front end castor; too much castor (caused by sagging front spring) can cause difficult steering.
2. Improper steering adjustment; over-adjusting to remove play.
3. Worn front tires.
4. Low air pressure - 35 psi minimum pressure is recommended.
5. Lack of steering lubrication.
6. Improper steering box lubricant.
7. Worn steering arm balls.

If all the above have no effect, there is a product on the market to ease your steering. It is in kit form. It includes the replacement of the drag link and tie-rod ends with teflon, and can be obtained through your Model A outlet stores.

Patent Cures



Red E. Power

OCMAFC Business Cards are Available

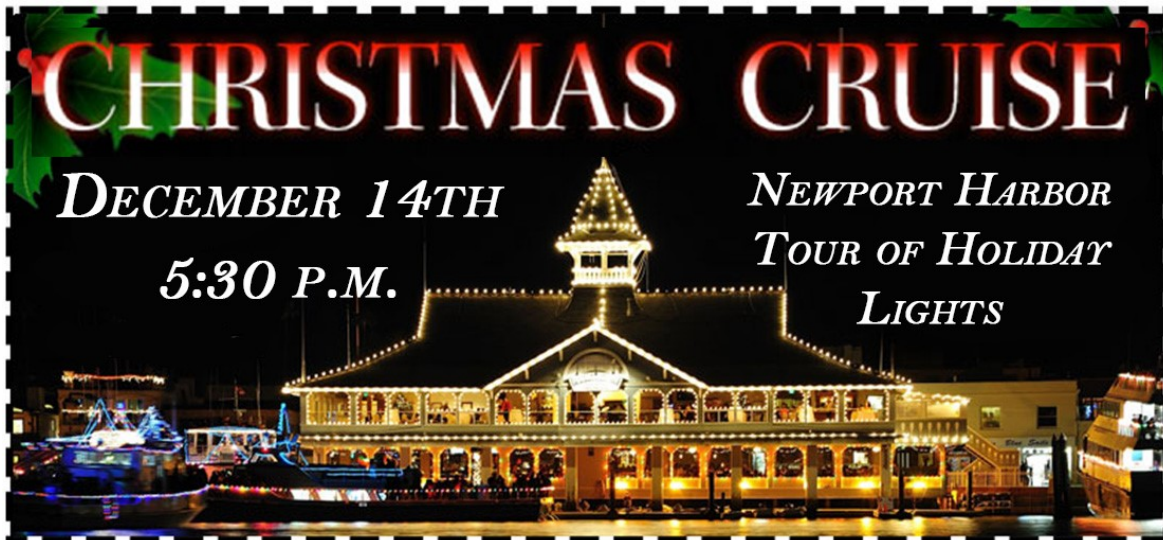
Have you ever met someone that shows an interest in your Model A and would like to know a little more about our club? Well, guess what? There are business cards for the club! Check it out, take some home to have handy in case you ever want to give out info about our club meetings. At the November club meeting, there will be a box of them in the back by the refreshments. **Help yourself.**

Continued from Page 5)

Meeting was adjourned around 8:30 pm.

*Addendum: Follow up to JP medical incident. He ended up spending 2 nights in the hospital and discharged home after 3 CT head scans, close monitoring and final clearance, with a swollen, black and blue face and huge bump over his closed/swollen eye. Thank you to Steve and Debbie Pavich who took care of getting his car home, and to Jim Runyon for driving him home from hospital.

Submitted by Kathie McCall (substitute for Norm Kredit)



STOP!!!

Technical Seminar
November 10th ~ 8am

**Jim Michaeloff's
Home**
4424 Birchwood Ave
Seal Beach

Rear Brakes and
Flathead Ted
Floaters Kit

Deadline for
submissions for the
next Distributor is

December 25, 2018

Submit all articles
and ads to
tissysmith1@gmail.com
(note new email!)
or mail to
P.O. Box 10595
Santa Ana, CA 92711

Need new friends or
technical talk? Come
to the BS Breakfast on
the first Saturday of
every month and meet
our heros.



HAPPY DAYS
ARE HERE AT LAST
THE DAYS OF
NINE TO FIVE
ARE PAST
I'VE WORKED
ALL MY LIFE AND
PAID MY DUES
NOW I'LL DO JUST WHAT
I CHOOSE!
TODAY I RETIRED
MY PASSIONS
SUCH AS TRAVEL AND ART
NOW THE FUN
REALLY BEGINS

Please change my
email address to
tissysmith1@gmail.com



SUNSHINE & SORROW

Sunshine and Sorrow



Well, it looks like we had a very healthy club in October. We must have scared all the bugs away or ate only medicinal candy. Hope that means most of you will be able to attend the November general meeting.

ORANGE COUNTY
MODEL A FORD
CLUB

Post Office Box 10595
Santa Ana, CA 92711

E-mail: info@ocmafc.org

Next General Meeting

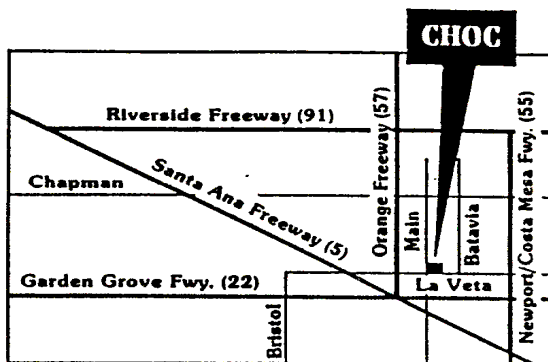
7:30 PM

[Second Thursday of every month]

Next Meeting November 8, 2018

CHOC Hospital Complex

455 South Main Street, Orange, CA



From Main Street, turn east on to Providence Ave. and immediately on your right, enter the structure and park on the second level. Meetings are held in Building 2 in the Wade Education Center-2nd Floor. Access meeting room through the double door entry off the 2nd Floor parking structure

We are on the Web!
www.ocmafc.org



Return Address:
Post Office Box 10595
Santa Ana, CA 92711

To:

Empty rounded rectangular box for recipient address.

First Class Mail